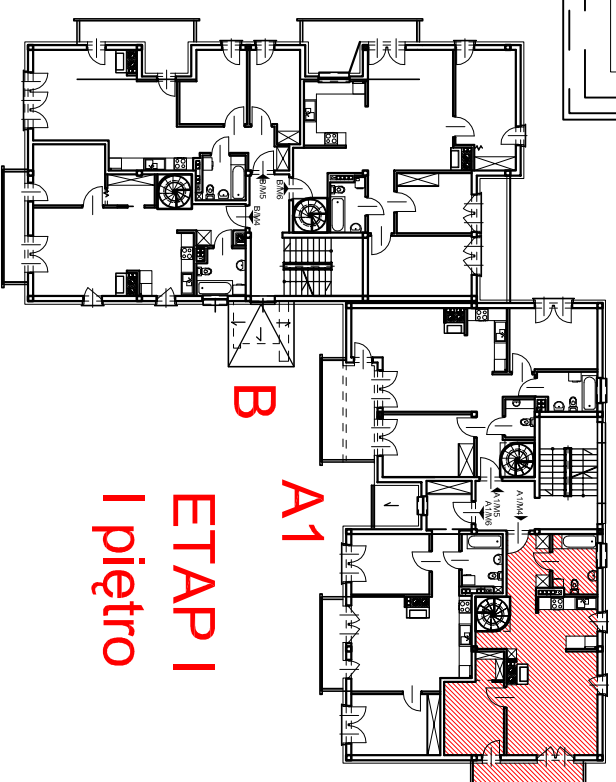
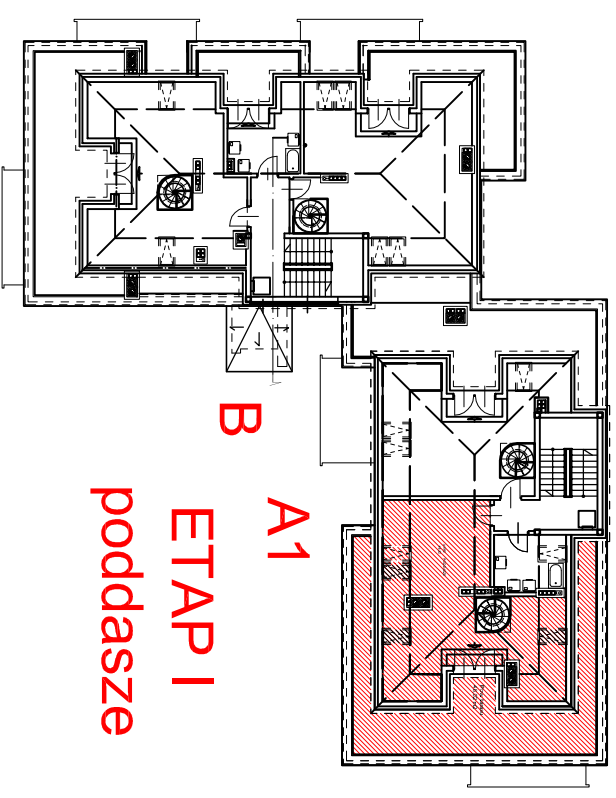


**A1/M4** - mieszkanie - 59,40 m<sup>2</sup>  
 poddasze - 48,52 m<sup>2</sup>  
 cz. mieszkalna - **107,92 m<sup>2</sup>**  
 balkon - 5,50 m<sup>2</sup>  
 taras na poddaszu - 46,02 m<sup>2</sup>



**B**  
**A1**  
**ETAP I**  
**I piętro**



**B**  
**A1**  
**ETAP I**  
**poddasze**